



Fishers Lane, London, W4 1YB

£299,950

WHITMAN & CO.

SALES · LETTINGS · COMMERCIAL

- Views of the beautifully maintained communal garden
- 15'5 Reception room
- Central Chiswick location
- Residents lounge and house manager
- Lift access
- No onward chain

Tenure - Leasehold
 Lease Length - 58 years remaining
 Ground Rent - £511 pa
 Service Charge - £3,000 pa
 Local Authority - Hounslow
 Council Tax - Band D

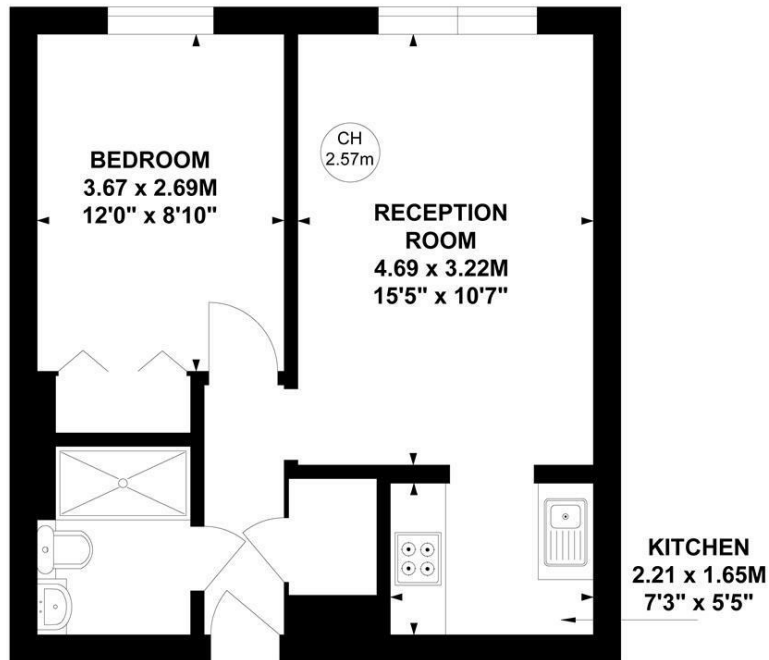
THE PROPERTY

A bright and spacious one-bedroom retirement apartment set within this sought-after central Chiswick development with Chiswick Common to the rear of the development whilst the front entrance on Fisher's Lane is just moments from the main high road with its array of shops, cafes and restaurants. This third floor (with lift) apartment comprises a spacious double bedroom, 15'5 reception room, fitted kitchen, shower room, and views of the beautifully maintained communal garden. The development benefits from residents living room and gardens, house manager, laundry room, and residents parking. Local transport links include Turnham Green tube station, numerous local bus routes with convenient vehicular access via the A4/M4 to Central London, Heathrow and the west. No onward chain.

Homecross House, W4

Approximate gross internal area
39.63 sq m / 427 sq ft

Key :
 CH - Ceiling Height



Third Floor

Not to scale, for guidance only and must not be relied upon as a statement of fact.
 All measurements and areas are approximate only

SITUATION



5-7 Turnham Green Terrace, Chiswick, London, W4 1RG

Tel 020 8747 8800

E-mail sales@whitmanandco.com

Website www.whitmanandco.com



MISREPRESENTATION ACT 1967

Whitman & Co. for themselves and for the vendors give notice that these particulars do not constitute any part of, an offer of contract. All statements contained in these particulars are made without responsibility on the part of Whitman & Co. or the vendor. None of the statements contained in these particulars is to be relied upon as statements or representations of facts. Any intending purchaser must satisfy himself by inspection or otherwise as to the correctness of each of the statements contained in these particulars. The vendor does not make or give, and neither Whitman & Co. or any person in their employment has any authority to make or give, any representation or warranty whatever in relation to the property.